

# The Casa Palermo



## *The Casa Palermo*

5 en suite bedrooms, plus powder bath,  
game room, theater, den, 3 car garage,  
courtyard.

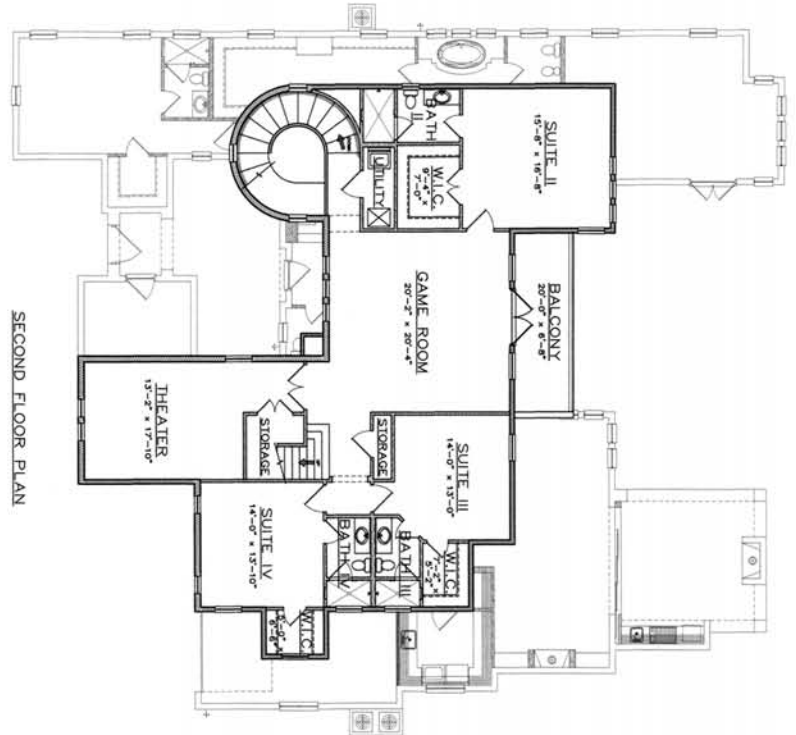
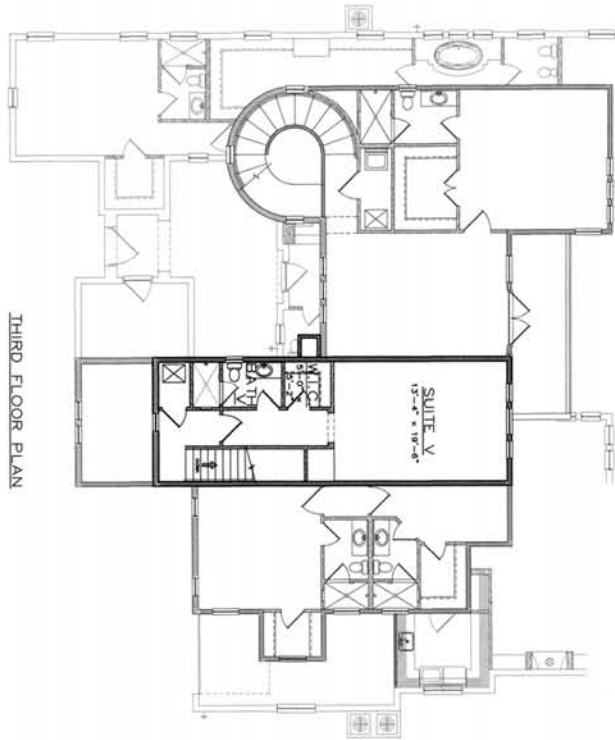
1st Floor Living	3,197 sq.ft.
2nd Floor Living	2,201 sq.ft.
3rd Floor Living	579 sq.ft.
<b>Total Living</b>	<b>5,977 sq.ft.</b>

Entry	52 sq.ft.
2-Car Garage	567 sq.ft.
1-Car Garage	302 sq.ft.
Lanai	134 sq.ft.
Outdoor Living	294 sq.ft.
<b>Total under Roof</b>	<b>7,326 sq.ft.</b>

Courtyard	213 sq.ft.
Balcony	138 sq.ft.

<b>Total</b>	<b>7,677 sq.ft.</b>
--------------	---------------------

# Casa Palermo



Renderings & floor plans are conceptual in nature, used for illustrative purposes and are subject to change without notice. Landscape depicted may not be to scale and may vary. Window and door locations may vary per elevation.